



playwaze

Playwaze is the digital home of grassroots and
community sport and physical activity

We connect those who provide activity with those who play



playwaze

Who is Playwaze for?

For participants

Search for your sport or activity,
or even find new waze to play



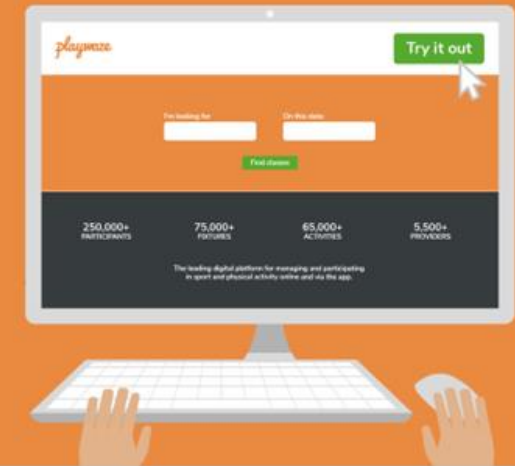
For providers

Your comprehensive toolkit for
organising sport and activity



For partners

Your trusted digital partner for
getting more people active



What will Playwaze do for you?

- **Allows you to create and manage your holiday activities online**
- Allows you to publish your holiday activities to the Holiday Activities Finder where parents and young people will be directed
- **Allows you to take bookings, with all required booking information, for your holiday activities**
- Allows you to report on your bookings so you can access and filter all booking information
- **Allows you to track attendance at your holiday activities for your reporting online and in the app**



What will Playwaze do for parents (or 'bookers') and young people?

- **Allows parents, guardians, and carers to find all available Holiday Activities in one place**
- Standardises all information about your Holiday Activities – information, suitability, availability, booking process – to improve the user's experience
- **Allows parents, guardians, and carers to book on behalf of an unlimited number of dependents online and on their phones**
- Protects all those online with safeguarding settings built-in (no private messaging, no access to information)

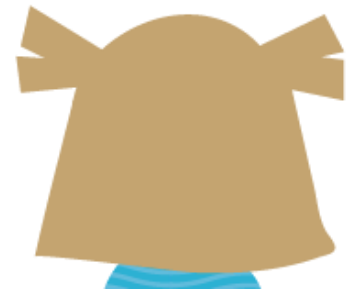
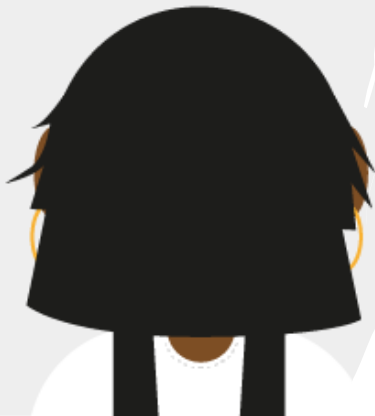
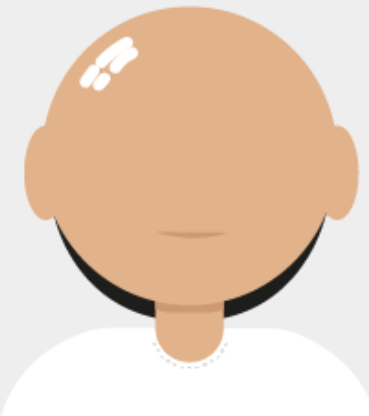


Four core processes available to you

- 1. Register as a provider on Playwaze**
You'll create what's called a provider 'community'
- 2. Create and manage your holiday activities** online
with administrator access
- 3. Take bookings through the activity finder**
embedded on the SASP website
- 4. Report on your bookings from Playwaze**
to access booking information, dietary requirements,
and more



Let's take a look...



playwaze

Hints and tips

- **Add your own logo and colour scheme** to make Playwaze feel like the digital home of your activities for you and your participants
- Limit the number of users you award administrator access to – **think about data security**
- The ‘Organiser’ role gives a user access to **manage attendance via the app** at the venue
- **Reporting is where you access all your booking information** - export to CSV



Frequently asked questions

- **Who can make bookings?**

Either a young person can book themselves (*single person* → *single account*), **OR** a user can book on behalf of an unlimited number of dependents (*single person* → *linked dependents*)

- **How does the platform control eligibility?**

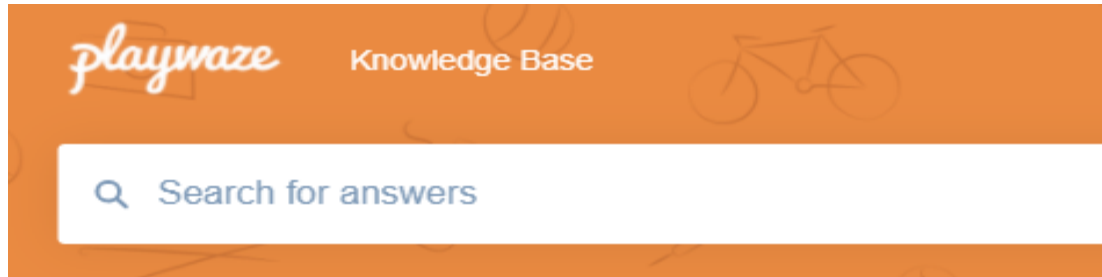
During booking, the user will be asked to enter a unique Free School Meal Voucher Code that will have been sent to them via email.

- **Can we add our own data fields for bookings?**

No, we have standardised the booking criteria for all bookings for Easter.



Help guides, Knowledge Base & Recorded Training



Holiday Activities Fund

How do I create my holiday activity?

Accessing your reporting data on your Holiday Activities

How to manage eligibility of your holiday activity participants

Setup and manage your bundles on your holiday activities

How to setup your Merchant account to receive payments for your Playwaze holiday activities.

How to create and manage your add-ons for your holiday activities

How to manage discounted pricing for your holiday activities

What are child and dependant accounts on Playwaze?

How to find your Free School Meal Voucher

KNOWLEDGE BASE

Access the Playwaze knowledge base [here](#).



I need help...where do I go?

- If you need technical help with the Playwaze platform, email:

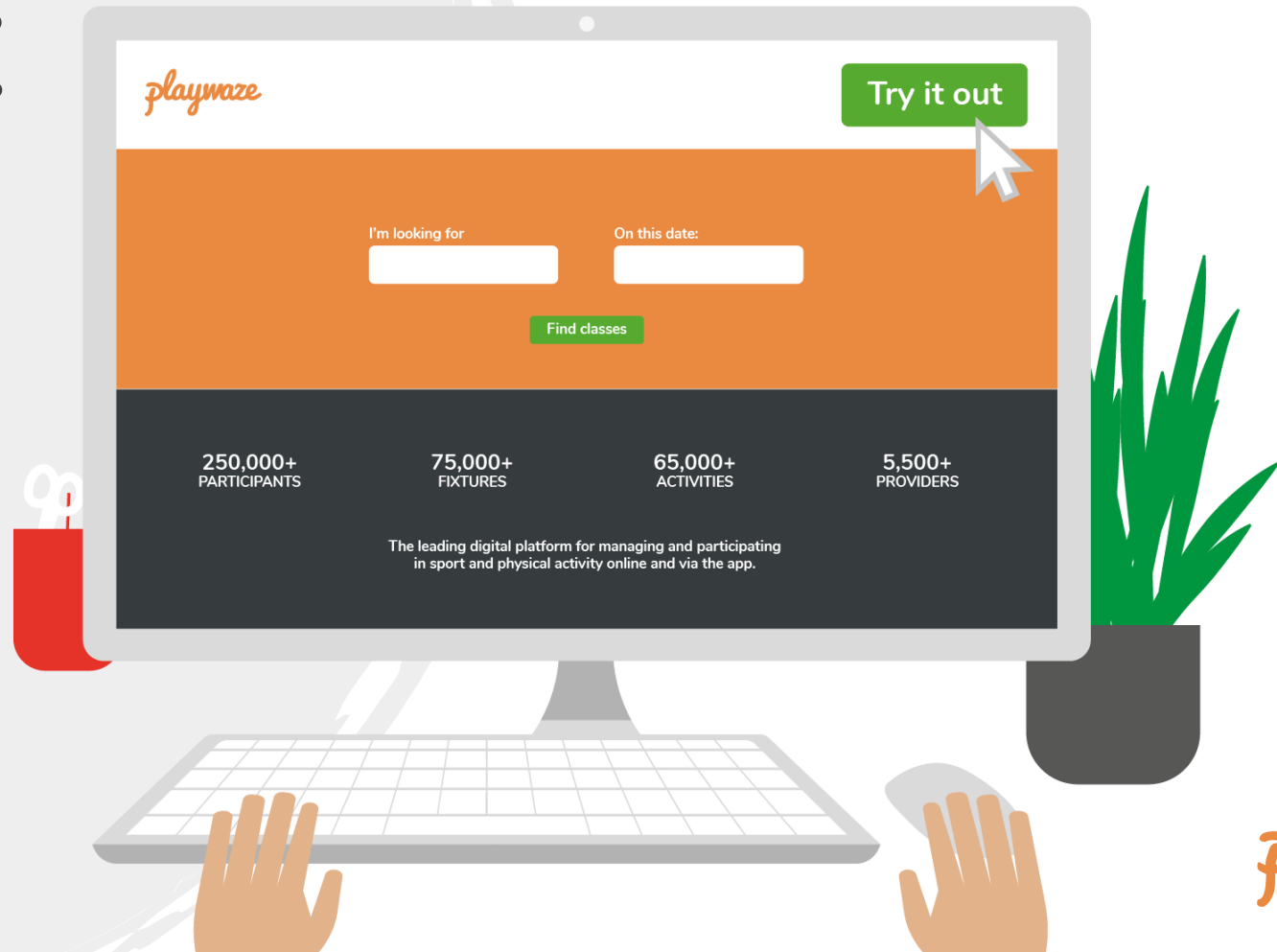
support@playwaze.com

Ticketed email support

Monday – Friday, 9am-5pm



Click Try it out to get started!



playmaze